



# Manual

## ESD VACUUM CLEANER

### A-ESD-MVAC



P/N X-DOC173

Feb 08-2019

Rev. 3

650 Scranton Pocono Hwy  
Covington Twp., PA 18444, USA  
Tel: (570) 842-2812 Fax: (570) 842-4290  
E-Mail: bokar@bokar.com

[www.bokar.com](http://www.bokar.com), [www.SMTrework.net](http://www.SMTrework.net), [www.SMT-tool.com](http://www.SMT-tool.com), [www.ESDmeters.com](http://www.ESDmeters.com),  
[www.SMTreballing.net](http://www.SMTreballing.net), [www.FineRework.com](http://www.FineRework.com), [www.X-Reflow306.com](http://www.X-Reflow306.com),

**Bokar International** 650 Scranton Pocono Hwy., Covington Twp., PA 18444, USA  
Tel: (570) 842-2812 Fax: (570) 842-4290 E-Mail: [bokar@bokar.com](mailto:bokar@bokar.com) [www.bokar.com](http://www.bokar.com)

## Technical Specifications:

Size (mm): 350\*350\*565

Capacity: 35L (~9 gal)

Voltage: 120V or 230V/50Hz-60Hz

Power: 1250W

Power Cord length: 4m

Hose length: 1.5m

Vacuum level: 18Kpa

Noise level: 82dBA (measured 1m from the unit with background noise 40db)

Surface Resistivity: 10E5~10E6 Ohms **throughout entire system**

The ZeroCharge Series clean room vacuum come standard with:

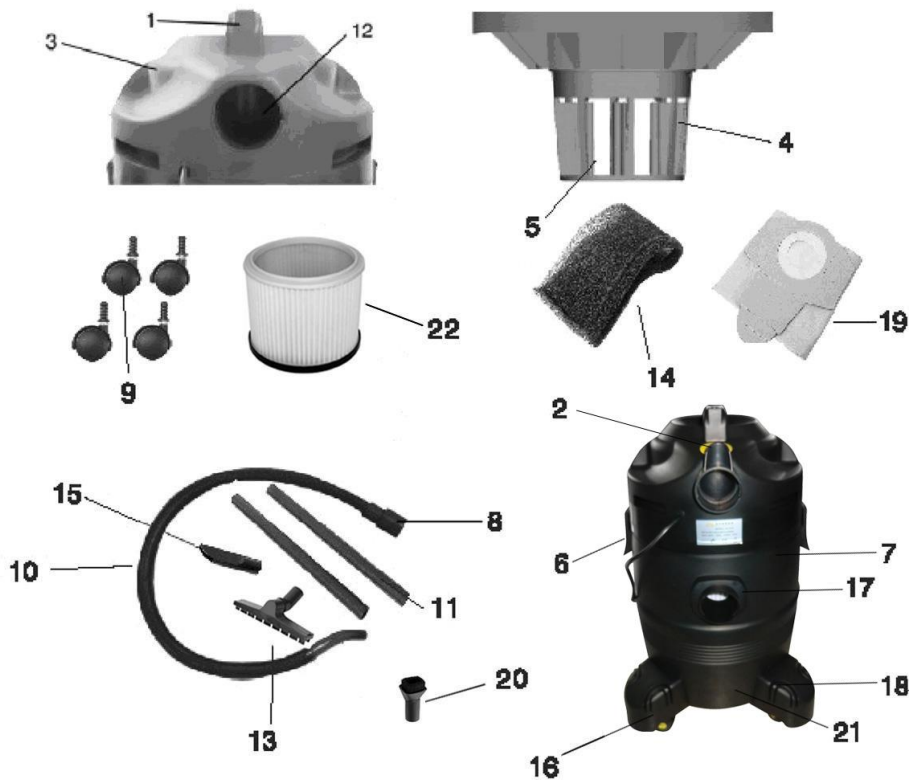
- HEPA cartridge Filter (.3 @ 99.97% Efficiency Micron Retention)
- one bag for dry vacuuming
- 10" ESD safe hose
- 16" ESD safe rubber flexible gooseneck
- standard ESD safe utility brush (to clean large areas such as floors, raised floors, and tabletops)
- A sponge filter for wet vacuuming

The unit has built-in EMI/RFI filter for safe use around electronic equipment.

## Most frequent applications:

- Board handling areas
- Equipment assembly cleaning
- Clean rooms cleaning

**WARNING:** To reduce the risk of electric shock, this unit has a polarized plug (one blade is wider than the other). This plug will fit in a polarized outlet only one way. If the plug does not fit fully in the outlet, reverse the plug. If it still does not fit, contact a qualified electrician to install the proper outlet. Do not change the plug by yourself.



**Description of parts:**

1、 Handle 2、 ON/OFF switch 3、 Top section 4、 Filter basket 5、 Safety float valve 6、 Clasp  
 7、 Container 8、 Vacuum hose connection 9、 Rollers 10、 Flexible vacuum hose 11、 Plastic tube  
 12、 Blow connection 13、 Wet brush 14、 Sponge Filter 15、 Short nozzle 16、 Pedestal 17、  
 Clasp seat 18、 Accessory holder 19、 A dust bag filter 20、 Square round brush 21、 Water drain  
 screw 22、 HEPA Filter

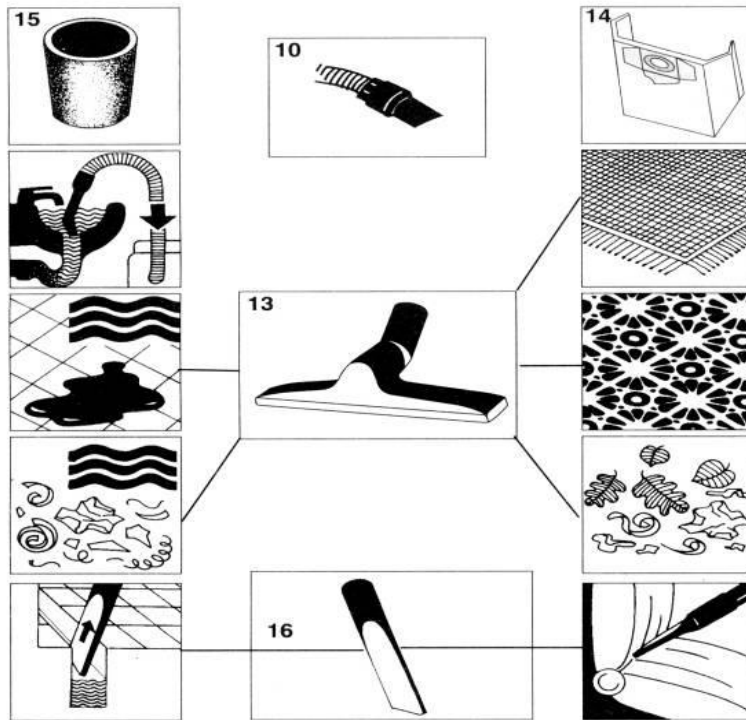
**Attention:**

- Before assembly and starting operation, read the operating instructions carefully.
- Check that the supply voltage to make sure that it corresponds to the voltage indicated on the unit label.
- Only connect to a proper 110-120V or 220-240 volt, 50/60Hz socket
- Pull the mains plug out of the socket when 1) the unit is not in use 2) before opening the unit for cleaning or maintenance.
- Never clean with solvents.
- Do not use the cable to pull the plug out of the socket.
- Do not leave the unit unattended when it is running,
- Keep away from children.
- The unit must not be operated if the mains connection lead is not in perfect condition.
- Do not vacuum 1) burning objects 2) glowing ashes and cigarette ends 3) flammable substances

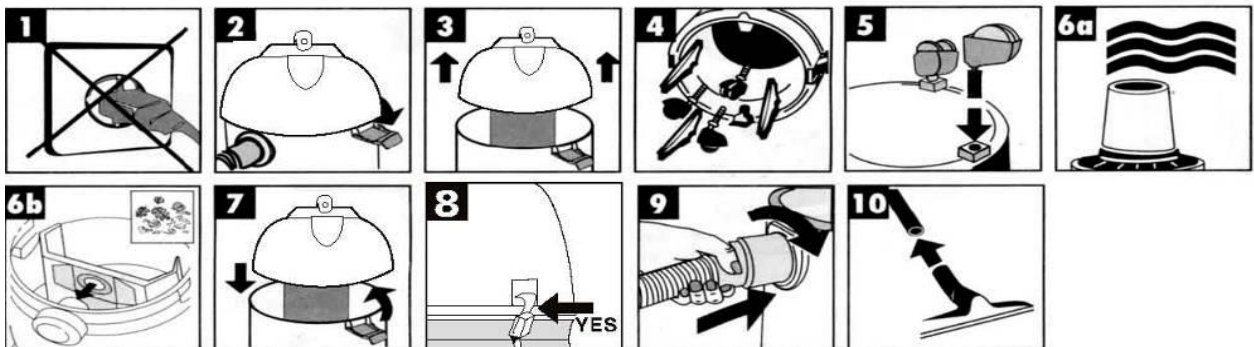
4) fire hazardous or explosive substances, vapors and liquids.

- Store the unit in a dry place.
- Do not operate a defected unit.
- Service shall be performed only by an authorized technician.
- Use only for operations which the unit is intended.
- Take great care when cleaning stairs.
- Use only manufacturer's attachments and spare parts.

### Overview of nozzles



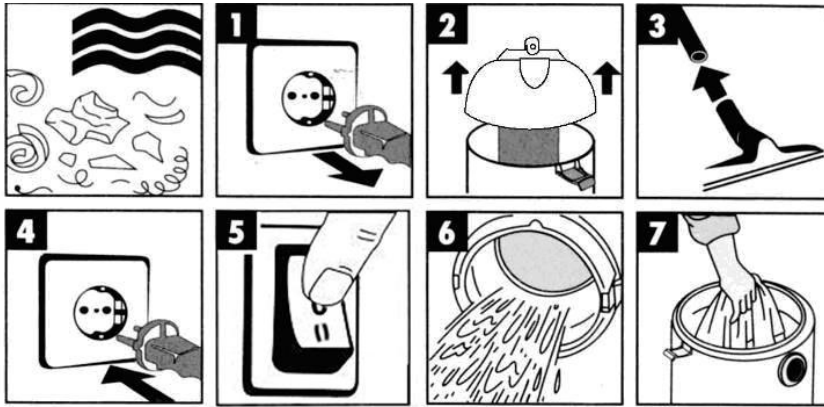
### Assembly



#### Please Note:

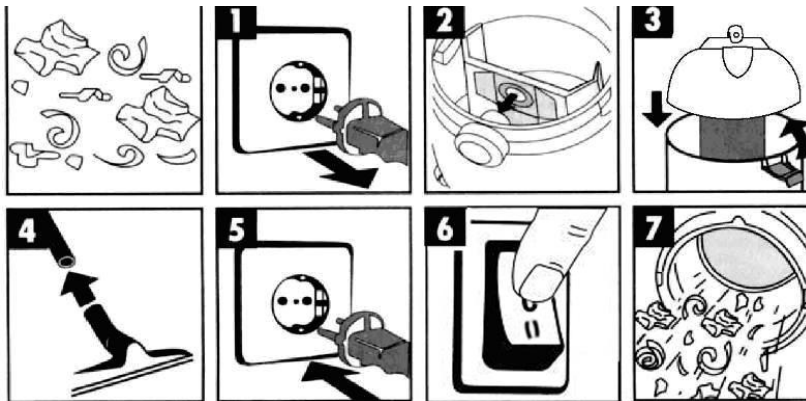
- \* Figure 1: When assemble the unit, don't plug into electricity
- \* Figure 6a: Use the supplied foamed plastic filter for wet vacuum-cleaning
- \* Figure 6b: Use the supplied dust bag for Dry vacuum-cleaning

## Wet vacuum –cleaning



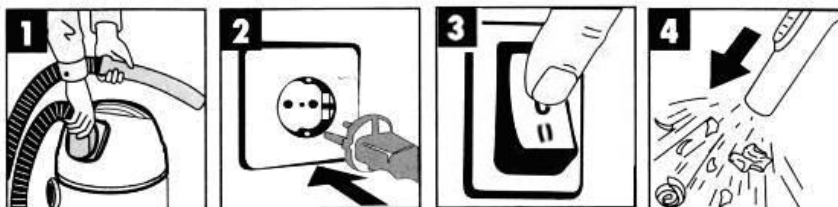
Pull the supplied foamed plastic filter over the filter Basket (Figure 2) for wet vacuum-cleaning. The dust bag included upon delivery is not suitable for wet vacuum-cleaning.

## Dry vacuum-cleaning



Slip the dust bag onto the socket (figure 2) for dry vacuum-cleaning. The dust bag is suitable only for dry vacuum-cleaning.

## Blowing

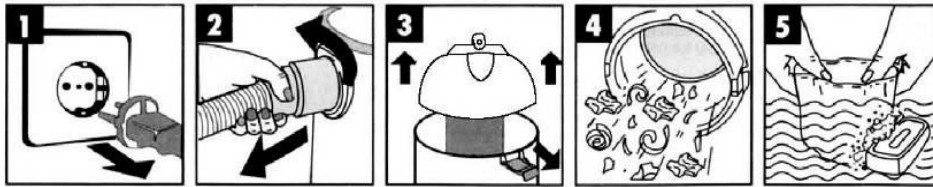


### Please note:

Figure 1: when blowing the dust or ash, please connect the hose on blowing connection



## Maintenance cleaning



Cleaning the tank:

When the tank is full of dust/liquid, the suction power will decrease significantly. Remove the plug from the electrical outlet and clean the tank. To clean the tank, unhook the two locks and remove the suction unit and filter, empty the tank and change the filter if necessary.

**SMT:** [www.Assembly-SMT.com](http://www.Assembly-SMT.com) [www.SMT-tool.com](http://www.SMT-tool.com) [www.X-Reflow306.com](http://www.X-Reflow306.com),  
[www.X-1003.com](http://www.X-1003.com) [www.SMTrepair.com](http://www.SMTrepair.com) [www.SMTFocus.com](http://www.SMTFocus.com) [www.FineRework.com](http://www.FineRework.com)  
[www.SMTdispenser.com](http://www.SMTdispenser.com) [www.BestBatchOven.com](http://www.BestBatchOven.com)

**ESD:** [www.ESDapparel.com](http://www.ESDapparel.com) [www.ESDmeters.com](http://www.ESDmeters.com) [www.ESDpackaging.net](http://www.ESDpackaging.net)  
[www.ZeroCharge.net](http://www.ZeroCharge.net) [www.No-Stat.com](http://www.No-Stat.com) [www.ESDchair.com](http://www.ESDchair.com) [www.ESDlabcoats.com](http://www.ESDlabcoats.com)  
[www.ESDcarts.net](http://www.ESDcarts.net) [www.ESDchair.com](http://www.ESDchair.com) [www.ESDbrushes.com](http://www.ESDbrushes.com)

**Other:** [www.SuperiorScrewdrivers.com](http://www.SuperiorScrewdrivers.com) [www.Super-Iron.com](http://www.Super-Iron.com)

**Latest Additions:** [www.PCBprototypingRobot.com](http://www.PCBprototypingRobot.com) [www.ECOguardCC.com](http://www.ECOguardCC.com)  
[www.ProportionAir.com](http://www.ProportionAir.com), [www.RRlotion.com](http://www.RRlotion.com) [www.ULT.de](http://www.ULT.de) (The best fume extractors)

